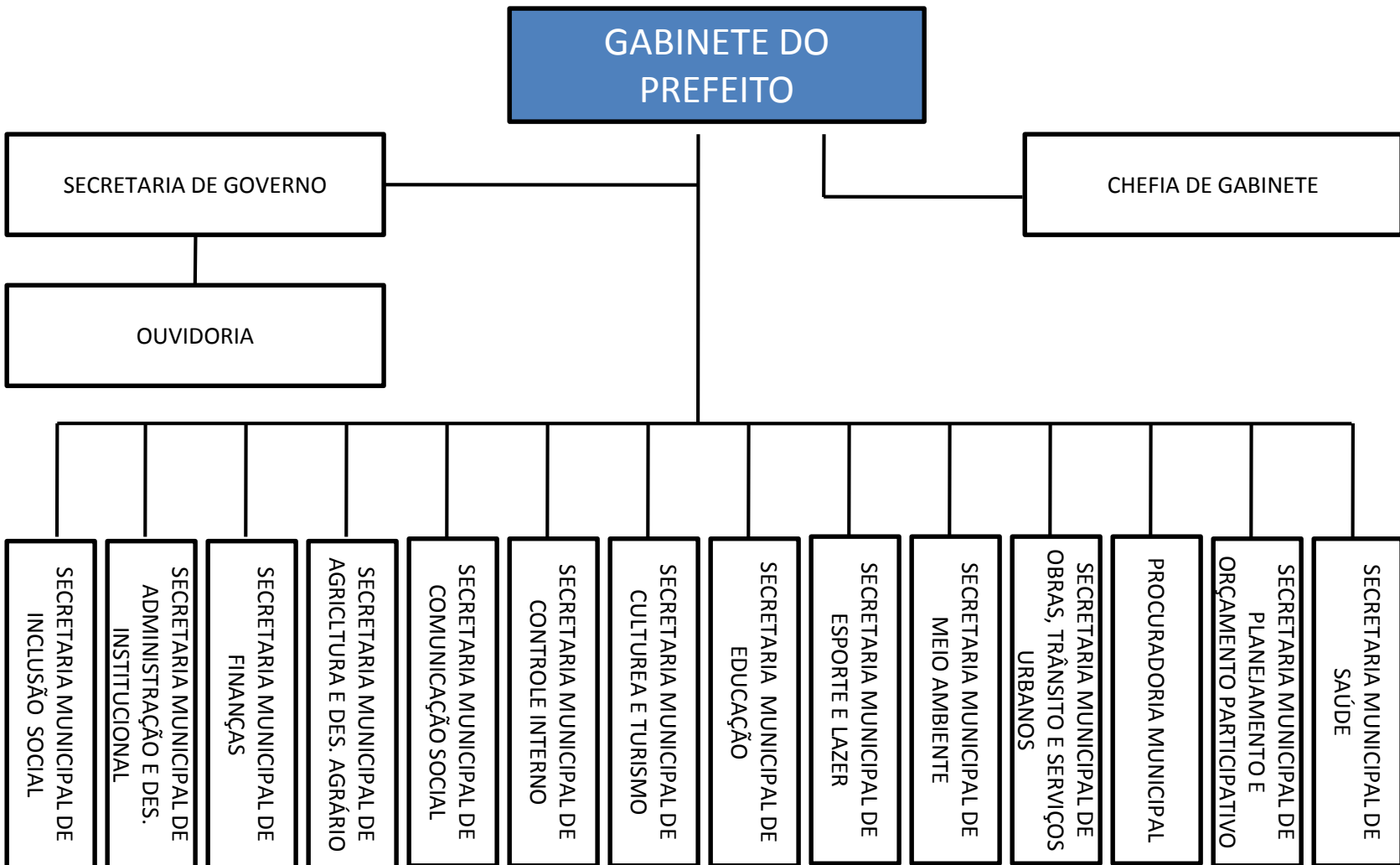




ANEXO XVIII

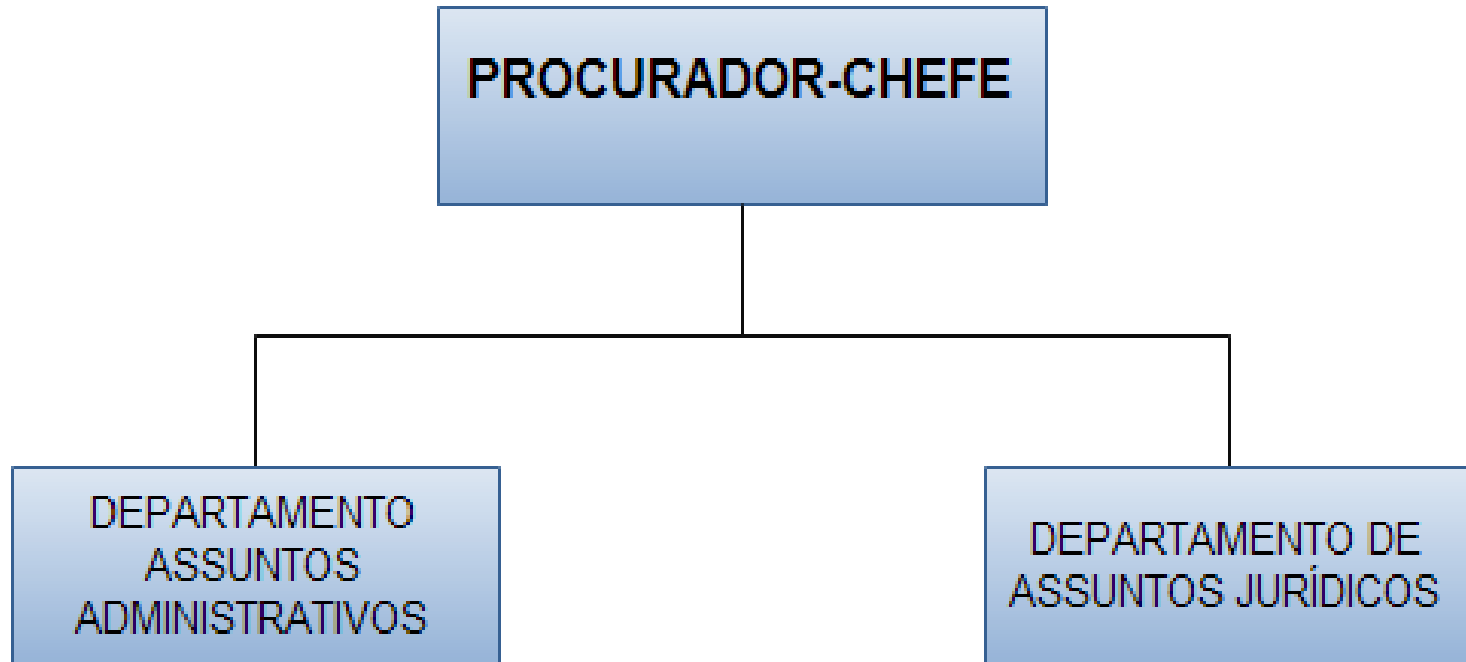
ORGANOGRAMA DA PREFEITURA MUNICIPAL DE UMBAUÇA





ANEXO XIX

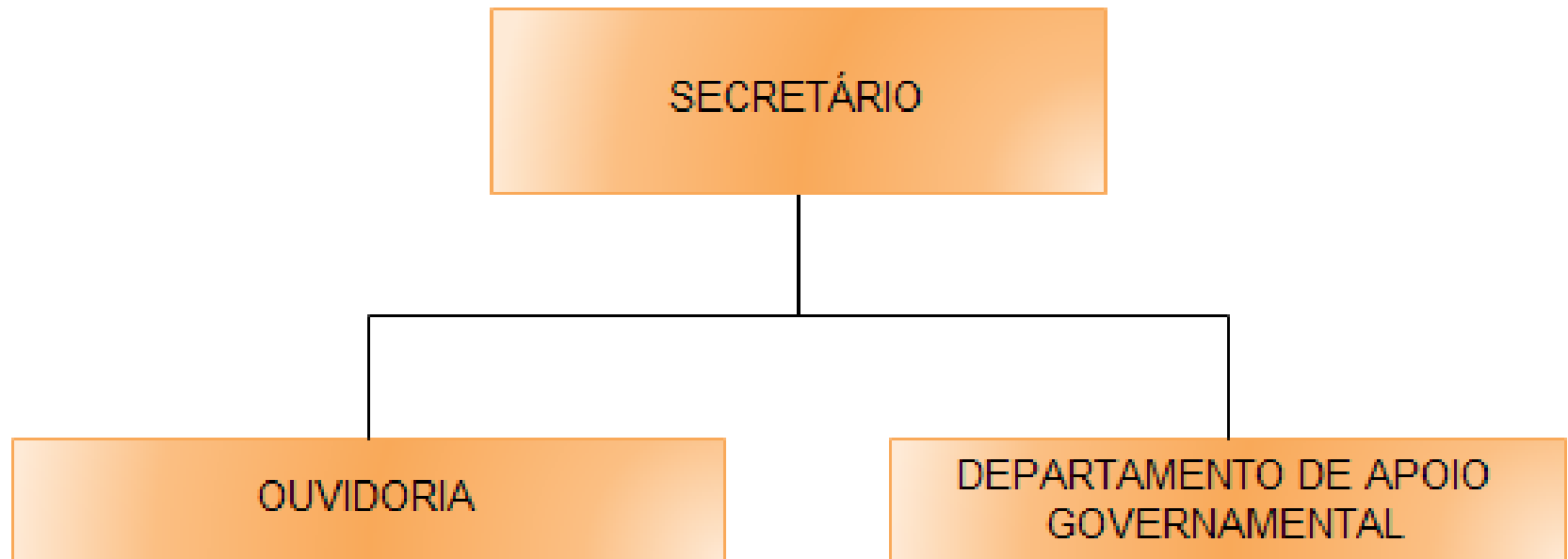
PROCURADORIA GERAL DO MUNICÍPIO





ANEXO XX

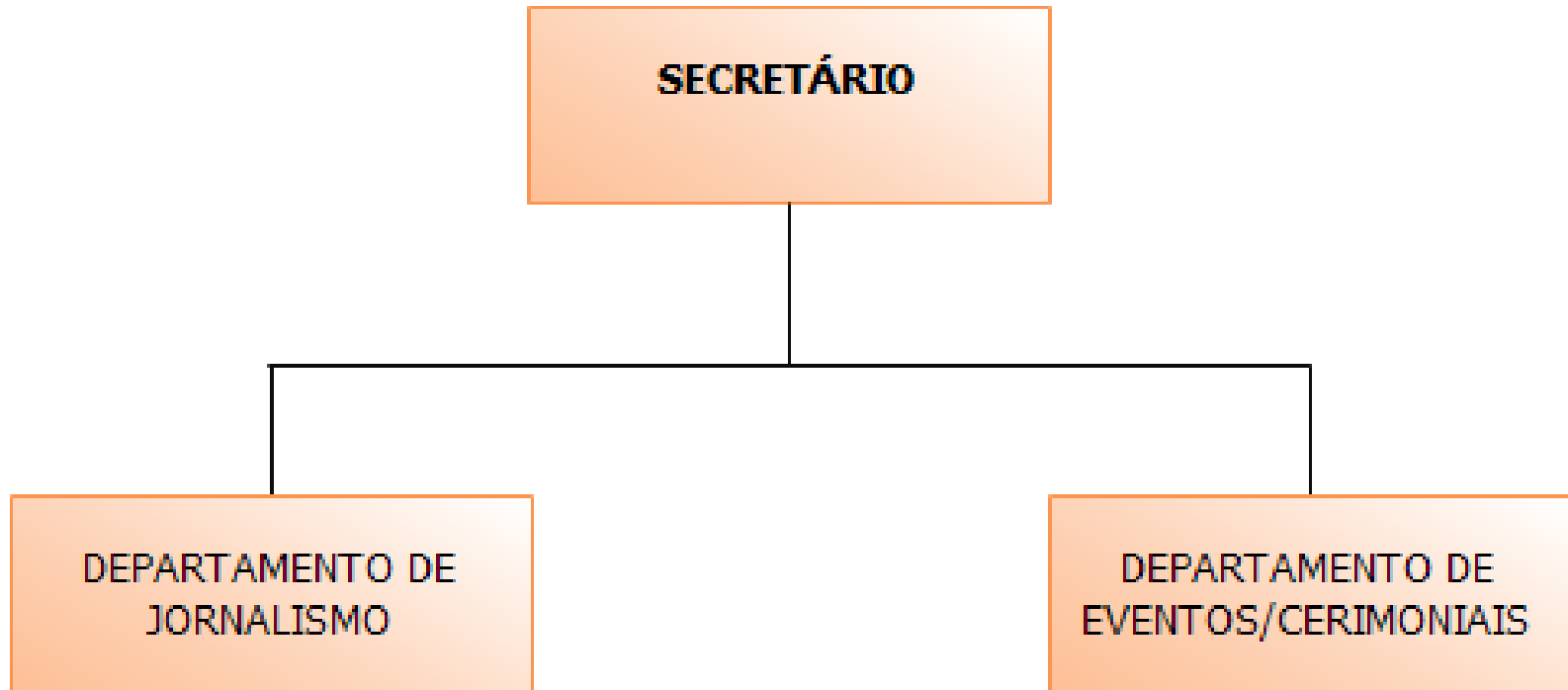
SECRETARIA DE GOVERNO





ANEXO XXI

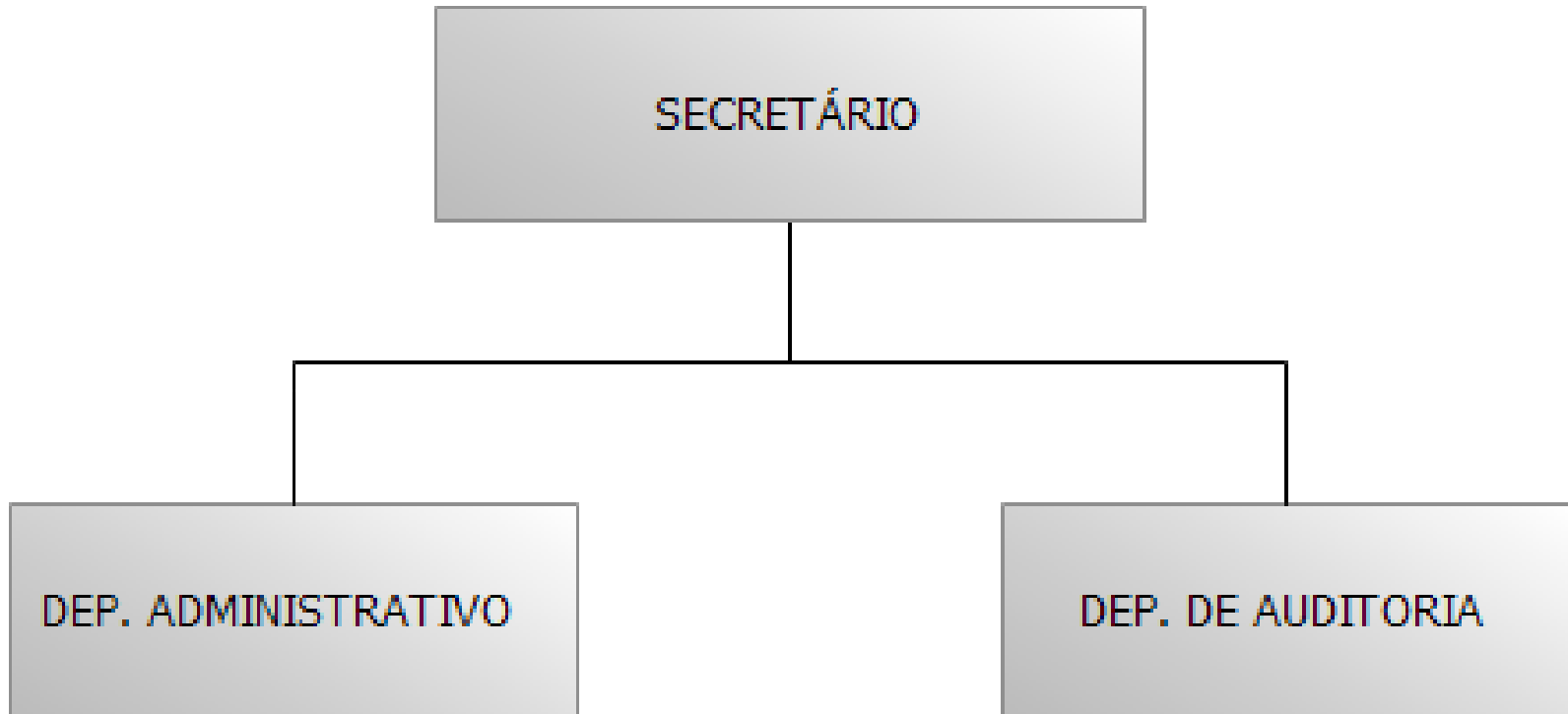
SECRETARIA DE COMUNICAÇÃO SOCIAL





ANEXO XXII

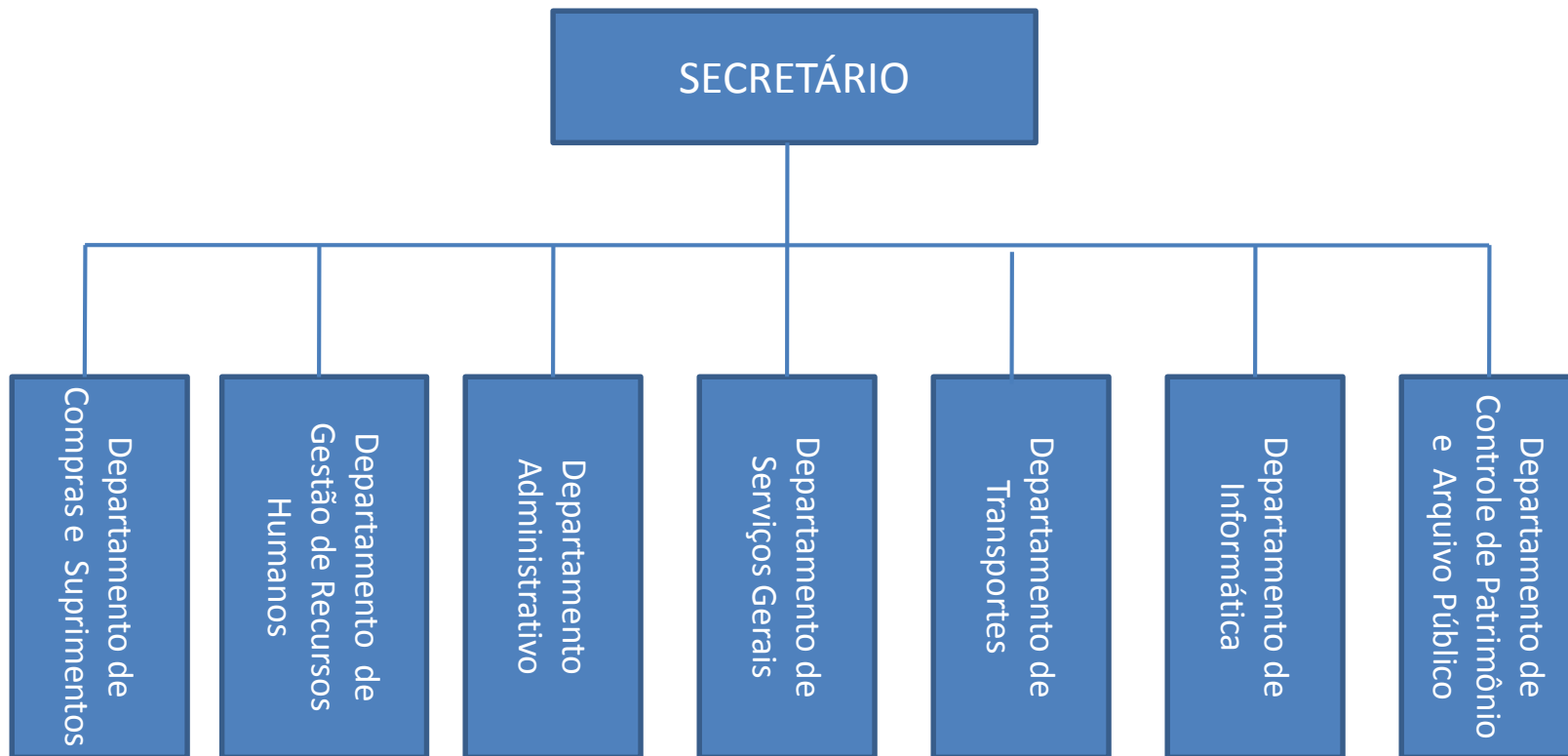
SECRETARIA DE CONTROLE INTERNO





ANEXO XXIII

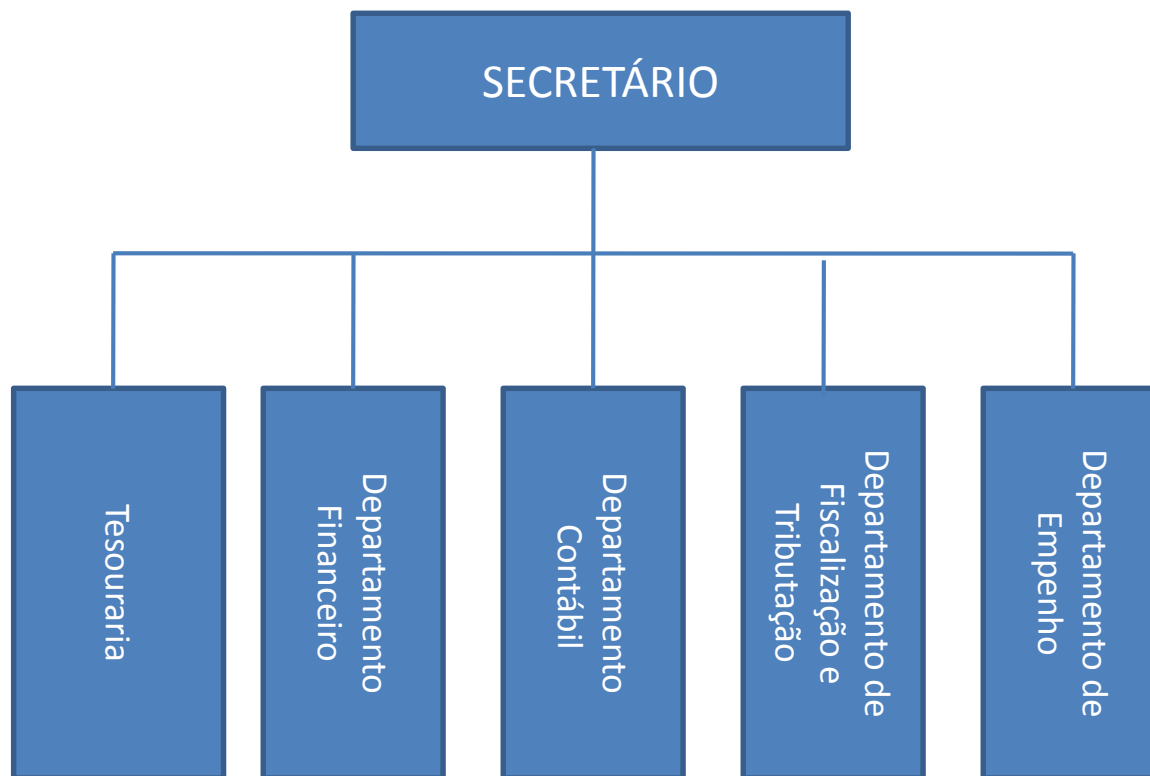
SECRETARIA DE ADMINISTRAÇÃO E DESENVOLVIMENTO INSTITUCIONAL





ANEXO XXIII

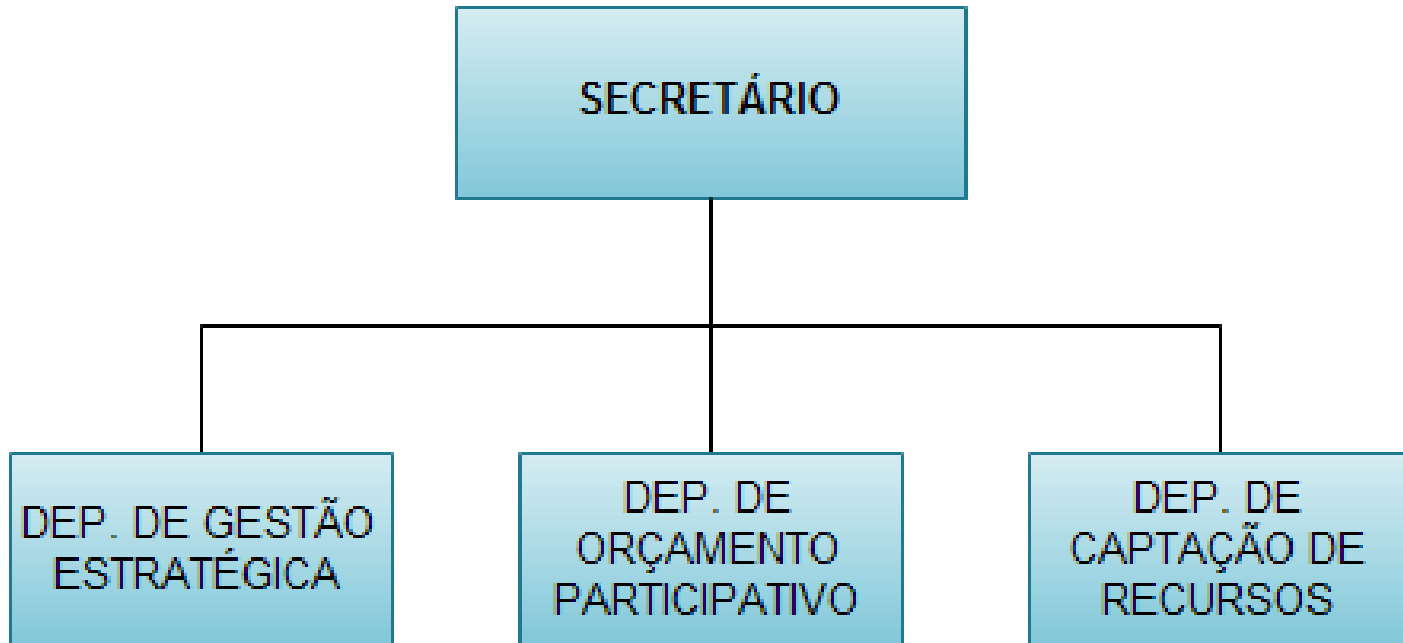
SECRETARIA DE FINANÇAS





ANEXO XXIV

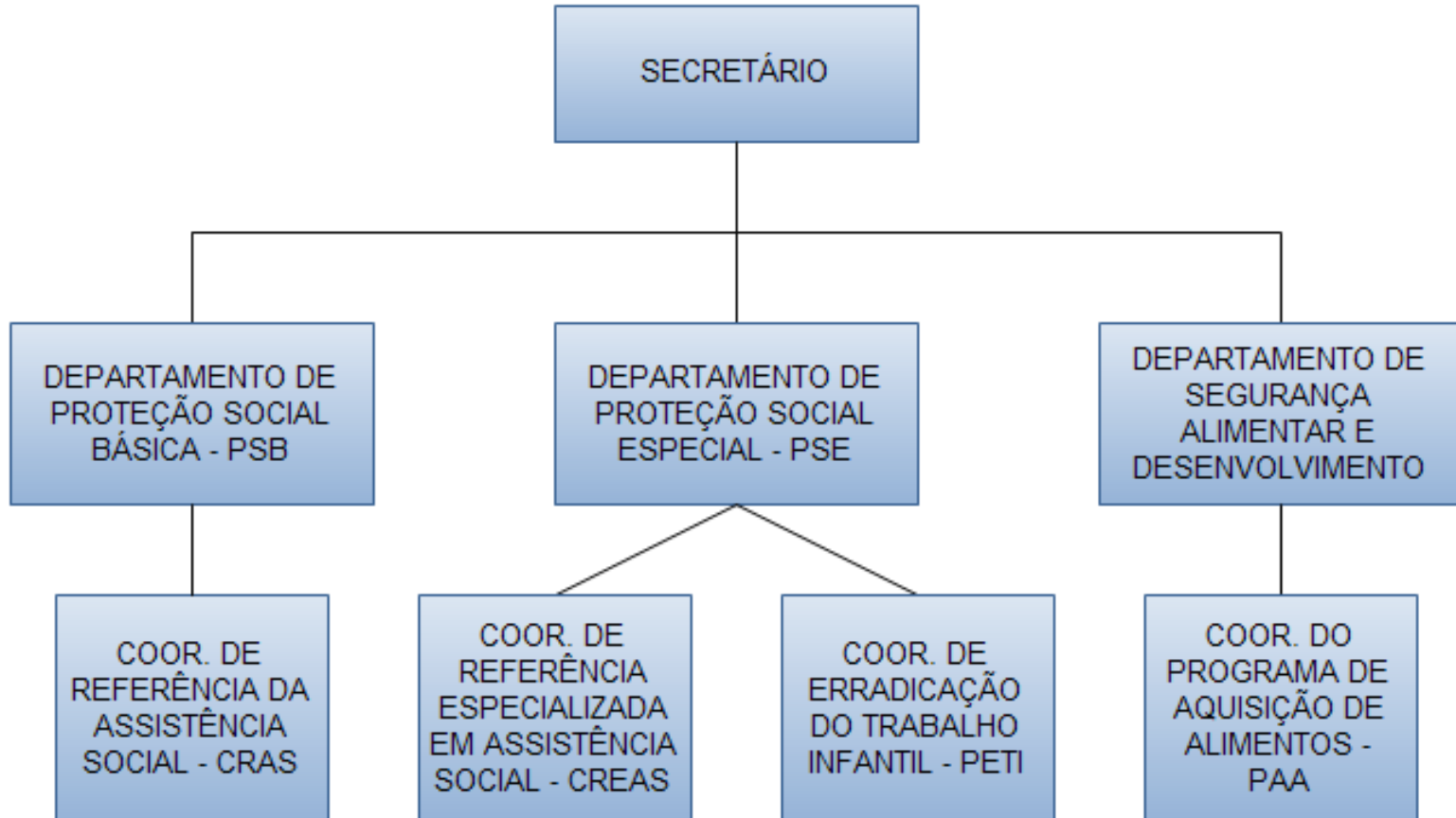
SECRETARIA DE PLANEJAMENTO E ORÇAMENTO PARTICIPATIVO





ANEXO XXV

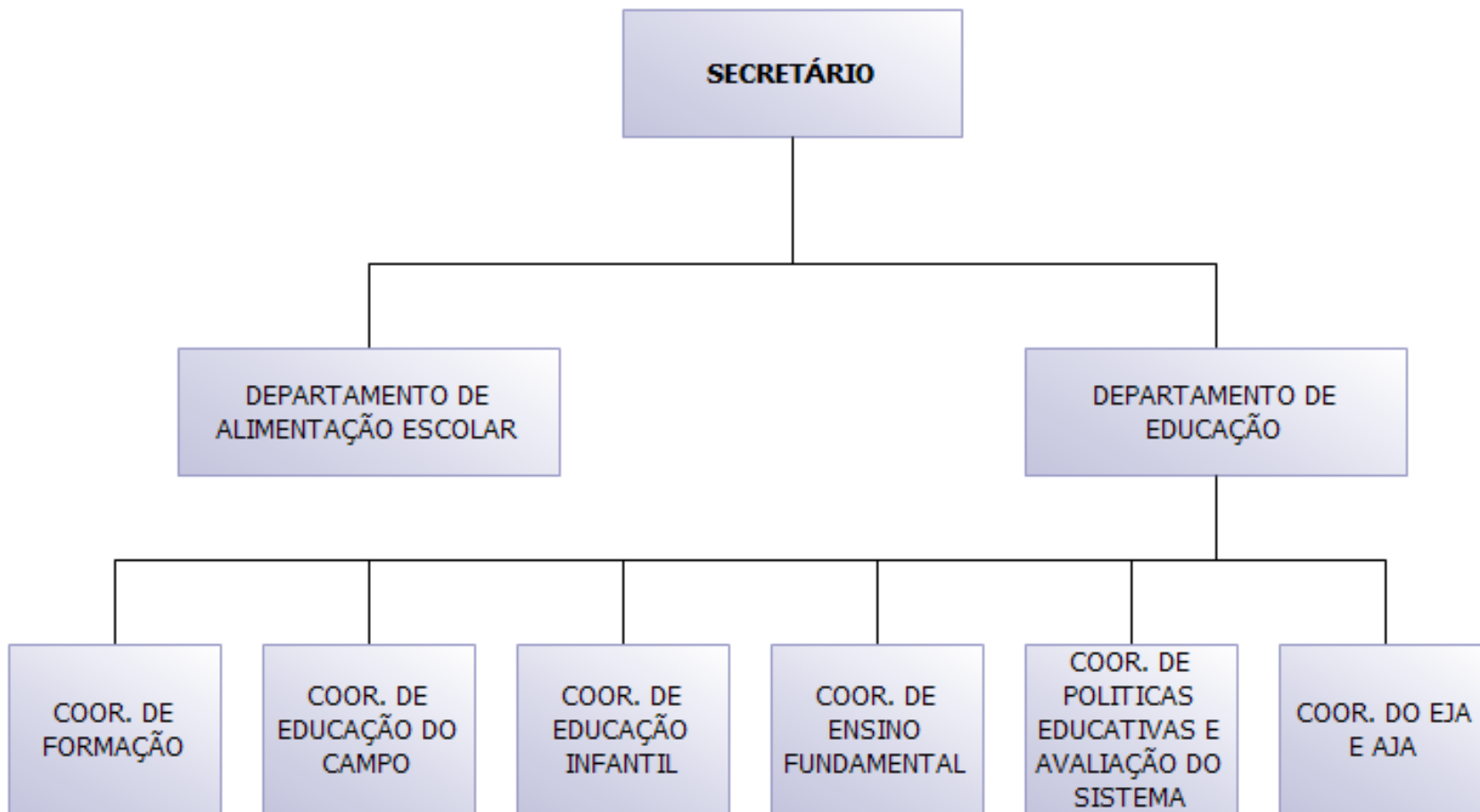
SECRETARIA DE INCLUSÃO SOCIAL





ANEXO XXVI

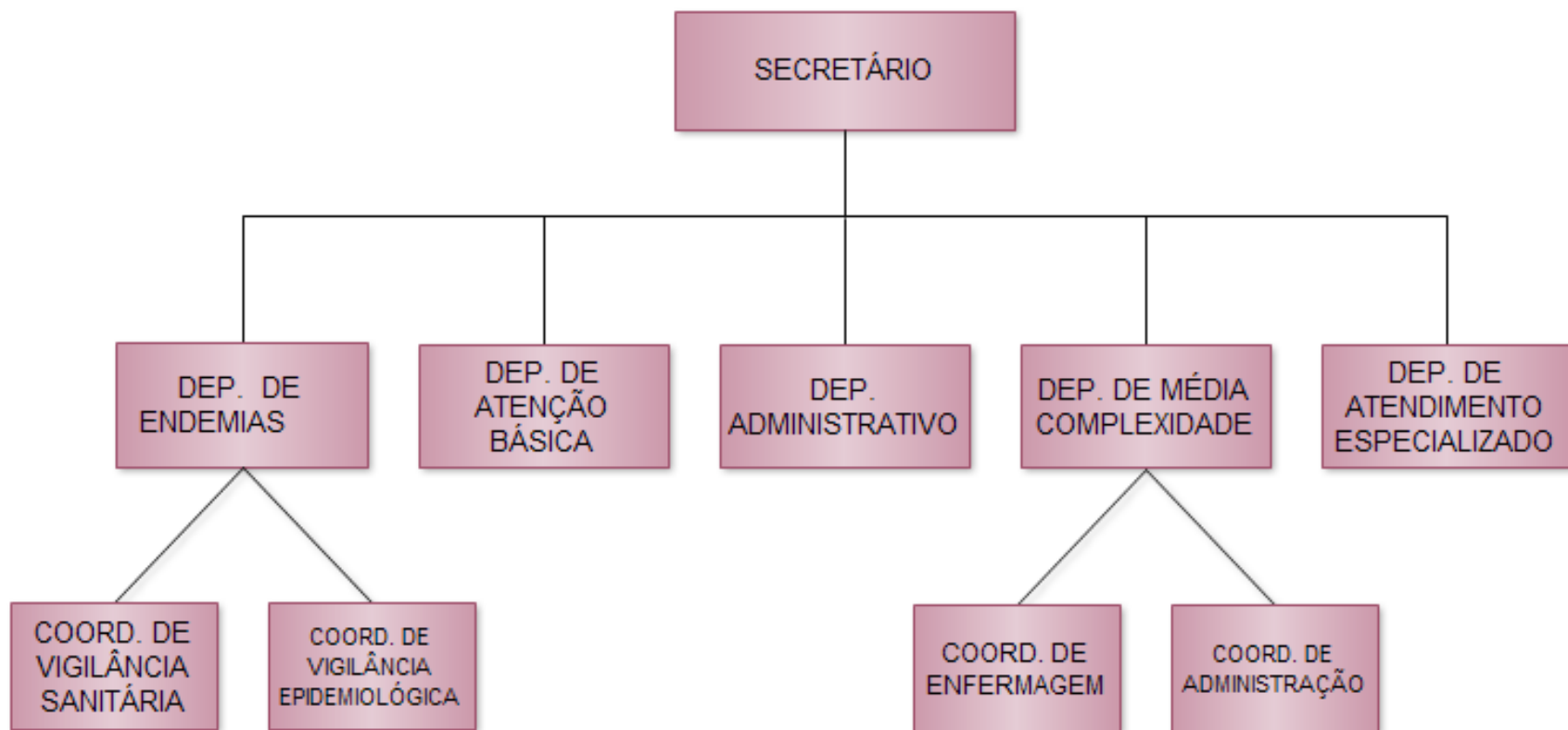
SECRETARIA DE EDUCAÇÃO





ANEXO XXVII

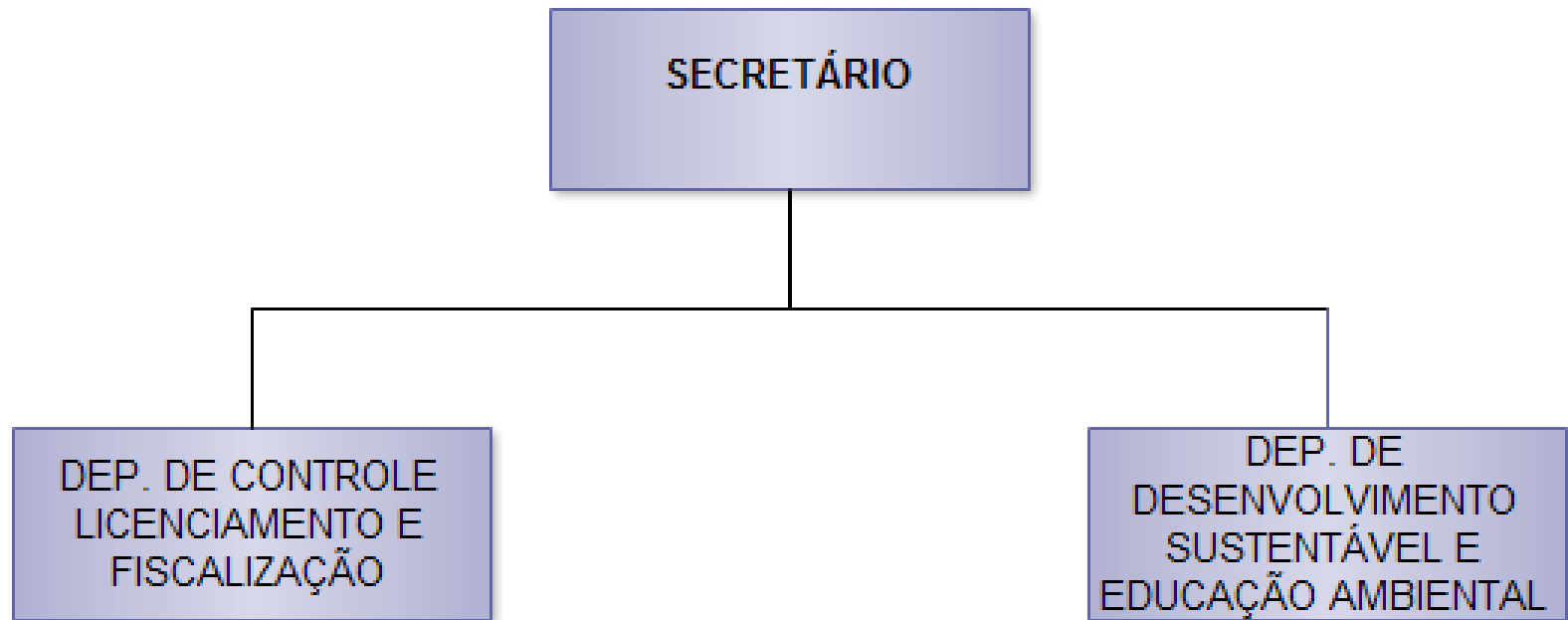
SECRETARIA DE SAÚDE





ANEXO XXVIII

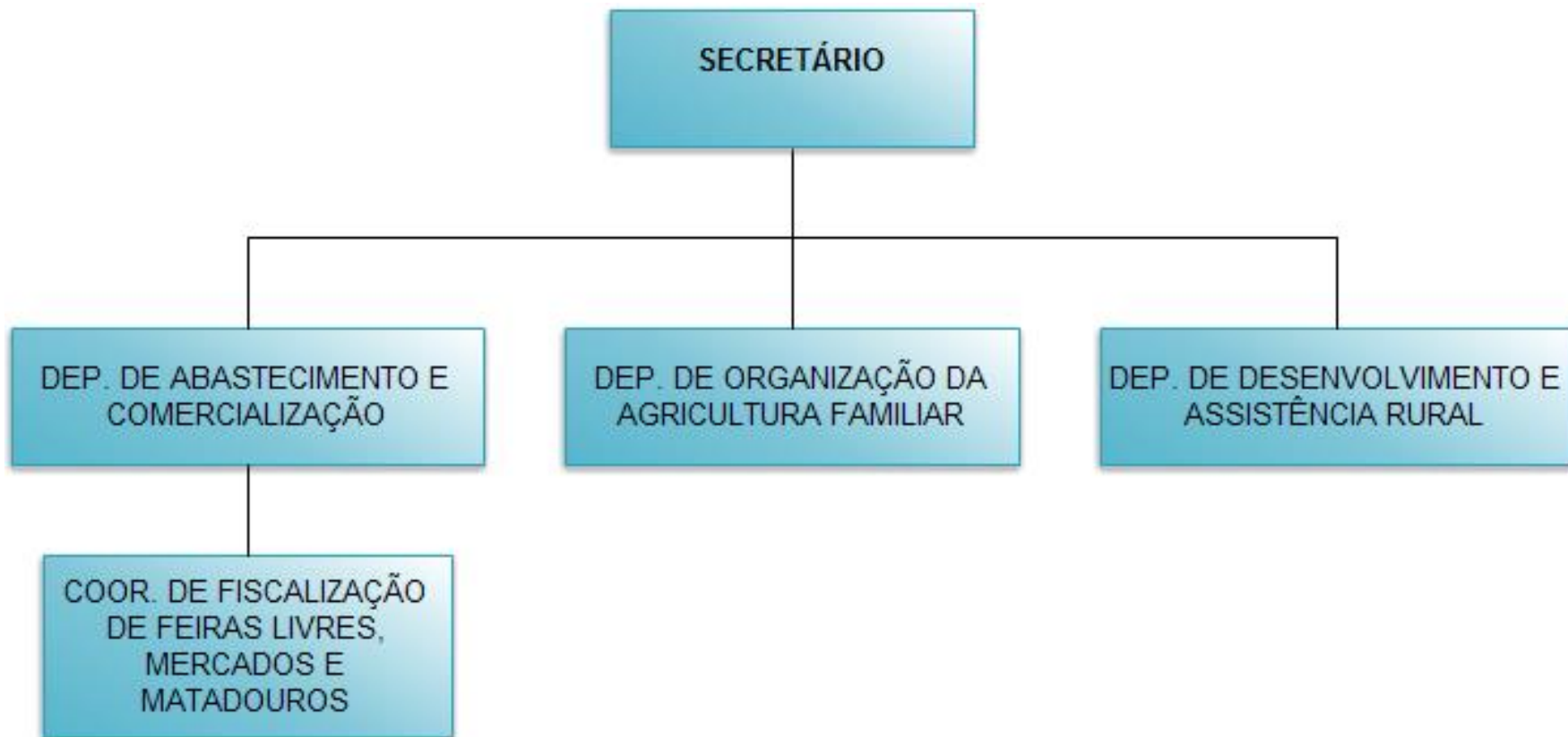
SECRETARIA DE MEIO AMBIENTE





ANEXO XXIX

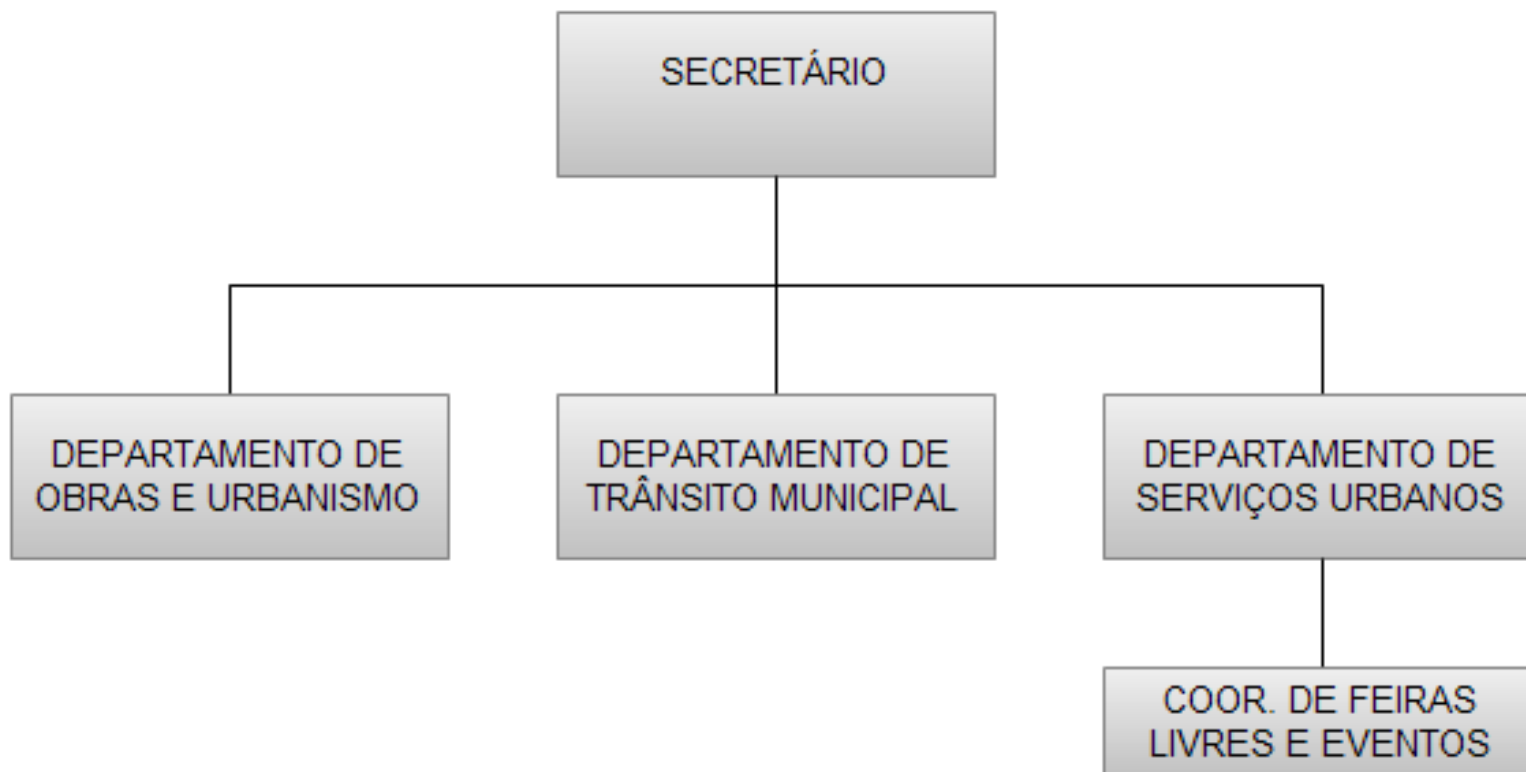
SECRETARIA DE AGRICULTURA E DESENVOLVIMENTO AGRÁRIO





ANEXO XXX

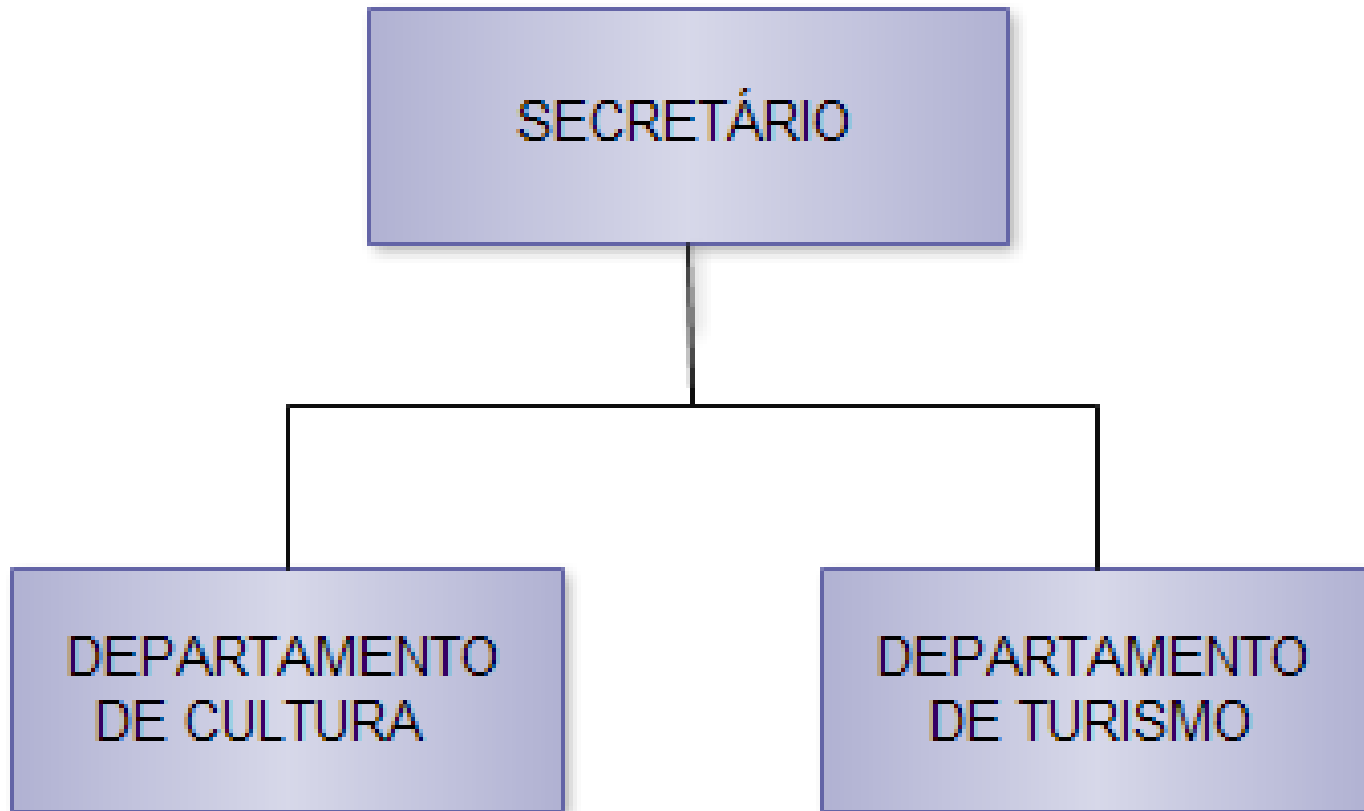
SECRETARIA DE OBRAS, TRÂNSITO E SERVIÇOS URBANOS





ANEXO XXXI

SECRETARIA DE CULTURA E TURISMO





ANEXO XXXII

SECRETARIA DE ESPORTES E LAZER

